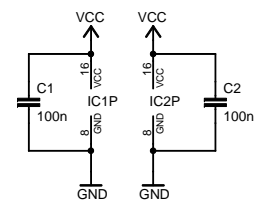


	1011	1013
R1	0	-
R2	-	100k
R3	-	100k
R4	0	-
R5	-	100k
R6	-	100k
R7	-	100k
R8	47k	-
R9	4M7	-
R10	0	-
R11	187k	19k1
R12	100k	-
R13	100k	-
R14	-	0
R15	-	1k
R16	-	1k
R17	0	1k
R18	0	-
R19	-	5k6
R20	-	5k6
R21	-	5k6
R22	-	100k
R23	-	100k
R24	-	100k
R25	100k	-
R26	1M	-
R27	100k	-
C2	-	X
C3	-	X
LED1	-	X
LED2	-	X
LED5	-	X
LED6	-	X
S3	-	X
S4	-	X



GIRA Tastsensor 2, 1fach/3fach (1011/1013)
 Reverse Engineering by Joerg S. 8/2008
TITLE: Tastsensor_1011_1013
 Document Number: _____ REV: _____
 Date: 17.08.2008 11:31:19 Sheet: 1/1